

Introduction

Refer to the **PCS Field Data Collector User Guide** (support.aiworldwide.com) for information on using the app. Refer to the Juniper Systems guides for additional information about the Mesa 3:

Juniper Quick Start Guide (included in the shipping package and on the device) includes information about installing the battery, hand strap, and other accessories.

Mesa 3 User Manual (available on the device) includes details on setting up, using, and maintaining the **Mesa 3**.

1 Download PCS Field Data Collector App

- 1 On the Mesa 3, tap Google Play Store icon.



Google Play Icon

- 2 If prompted to sign in using a gmail account, sign in using an existing gmail account. If you do not have a gmail account or wish to use another email address follow these steps:
 - a On your PC, go to google.com.
 - b Click **Sign In**.
 - c Click **Create Account** and select **For Myself**.
 - d In the **Create Your Google Account** window, select **Use my current email address instead** and complete registration.
 - e Return to Google Play on **Mesa 3** to continue.
- 3 Search for **PCS Field Data Collector**.
- 4 Tap **Install**.

2 Set Screen to Rotate

- 1 To set the screen to automatically rotate between portrait and landscape modes, swipe down from the **Home** screen to open **Quick Settings** window. Expand, if necessary.
- 2 Tap the **Auto-rotate** icon.

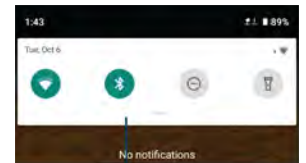


Auto-rotate

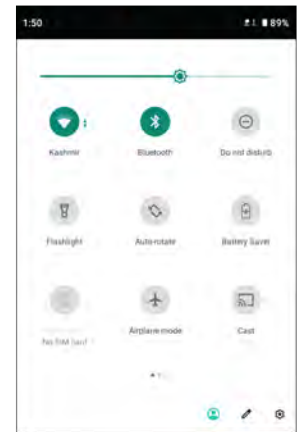
The icon changes color to show that it has been activated.



Auto-rotate




Swipe down to expand



Settings

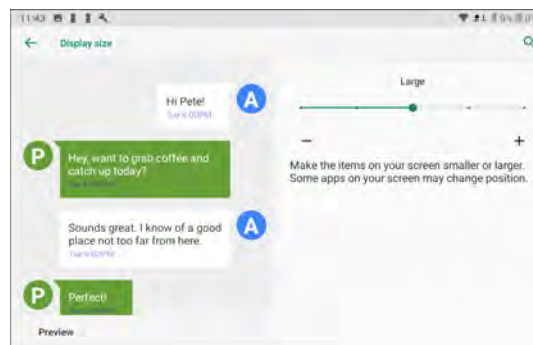
3 Set Display Size and Sleep Setting

To improve the usability of the PCS Field Data Collector application, it is recommended to enlarge the display size and set the sleep time to your preference.

- 1 Swipe down from the **Home** screen to open **Quick Settings** window. If necessary, expand window until the **User**, **Edit**, and **Settings** icons display.
- 2 Tap  **Settings** icon.
- 3 Tap **Display**.
- 4 Tap **Advanced**.
- 5 Tap **Display size**.
- 6 Slide the adjustment bar to **Large**.
- 7 Tap <-- to return to previous window.
- 8 Tap **Sleep**.
- 9 Select desired sleep time.



User, Edit, and Settings icons

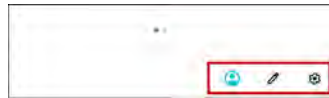


Display Size

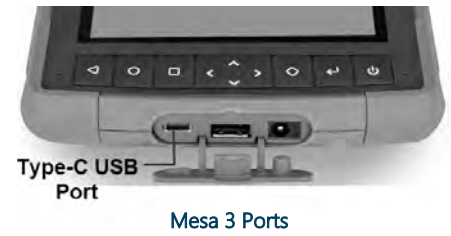
4


Set Mesa 3 to Always Use USB for File Transfers

- 1 To set your device to always use the USB port to transfer files from the device to a computer, connect a Type-C USB cable to the port on the **Mesa 3**.
- 2 Swipe down from the **Home** screen to open *Quick Settings* window. If necessary, expand window until the **User**, **Edit**, and **Settings** icons display.



User, Edit, and Settings icons



- 3 Tap  **Settings** icon.
- 4 Tap **About tablet**.
- 5 Tap **Build number** seven (7) times to activate Developer Mode (a message displays that informs you when you reach this mode).
- 6 Go back to **Settings**.
- 7 Tap **System**.
- 8 Tap **Advanced**.
- 9 Tap **Developer Options**.
- 10 Scroll down to and tap **Default USB configuration**.
- 11 Tap **File Transfer**.



Product Training & Enablement

Scan the QR code to access
Mesa 3 training content